

Fuji

Patent applied for

Canter System Plus
FK-5000



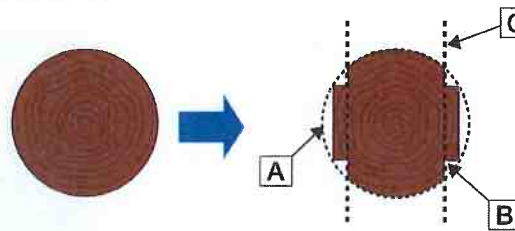


New System Greatly Shortening Conventional Process

Canter System Plus FK-5000

- Realizes high-speed processing.
- Assures high yield of production, by adopting the software to judge optimal conversion of timber and executing step cutting capable of short material sizing.
- Enables one unit to handle the process conventionally requiring four kinds of unit, realizing operation by a small number of people.
- Saves the space for installation.
- Eliminates troubles encountered in the conventional disposal process of mill ends.

FK-5000



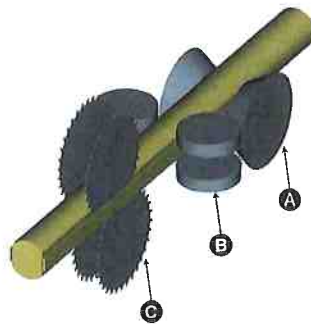
One unit handles four kinds of conventional process.

A. Canter
These tools process both sides of timber into chips.

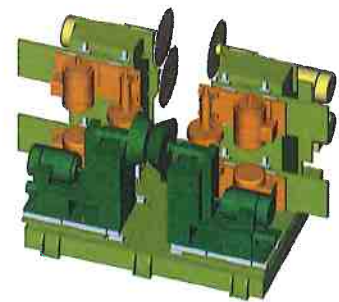
B. Profiler
Four pieces of profiler use tools functioning like the double edge below, to edge top and bottom and both sides and produce cut material into chips.

C. Chip saw
Finally chip saws cut the processed lumber into boards.

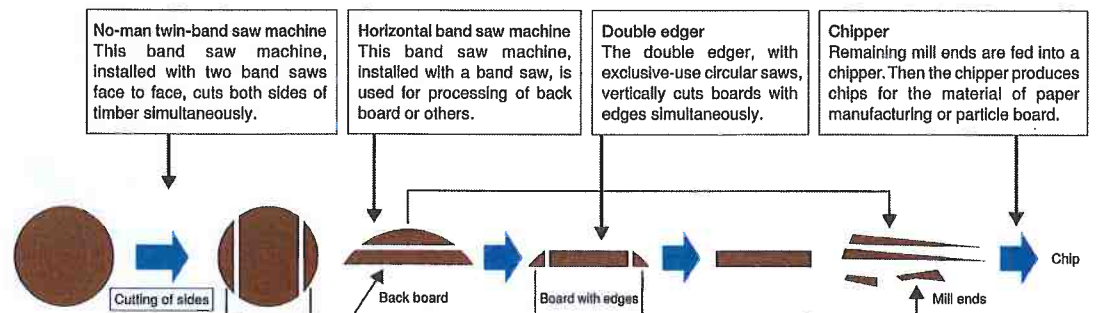
Tool image



General image



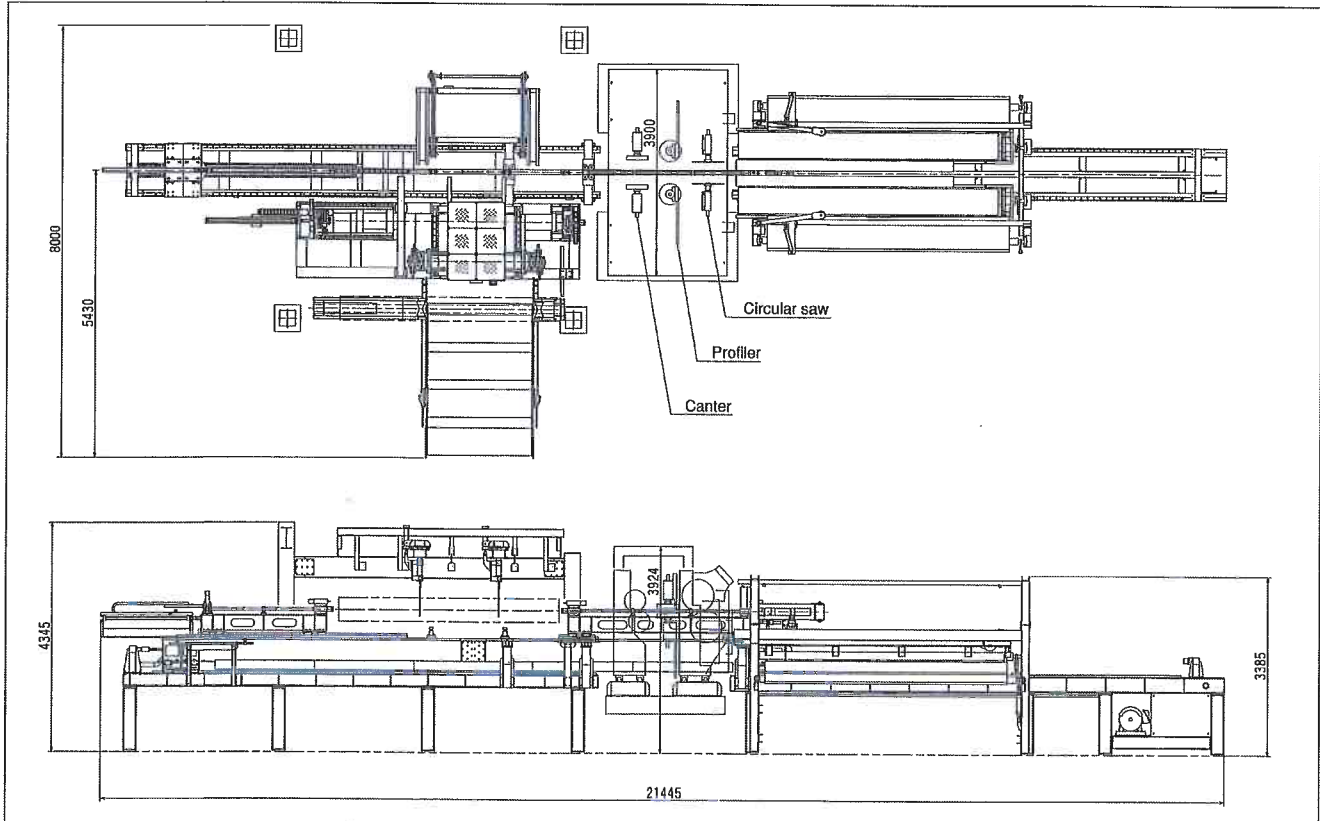
Conventional lumber sawing line



■ Specification

Canter system	
Model	FK-5000
Capable diameter of timber	φ120 - φ450mm
Capable length of timber	3000 - 4000mm
Canter	4 sets (45.0 - 90.0 kW, 4 units)
Profile	4 sets (45.0 - 90.0 kW, 4 units)
Double-arbor twin circular saw	4 sets (45.0 - 90.0 kW, 4 units)
Minimum product size (circular saw)	105 mm
Minimum canter size	90 mm
Chip size	18 - 25 mm
Center chuck carriage unit	
Feeder	Vector control (37.0 - 45.0 kW)
Carry system	By LM guides
Cabling	By cable bearers
Carry speed	50 - 100 m/min
Charger unit	
Flush end roller	2 pc.
Centering unit	Self-centering
Top charger	Swing type, 2 sets
Automatic diameter class measurement	Laser system (at 5 points), 16 points max. optionally

■ Dimensional drawing



FUJI SEISAKUSHO, LTD.

11-11, Sugizaki-cho, Numazu-shi, Shizuoka, 410-0033 Japan
 Phone: 81-55-921-2233/FAX: 81-55-921-2239
 E-Mail: info@fujiseisakusho.co.jp

URL: <http://www.fujiseisakusho.co.jp>

Branches: Nagoya, Osaka, Hiroshima, Kyushu